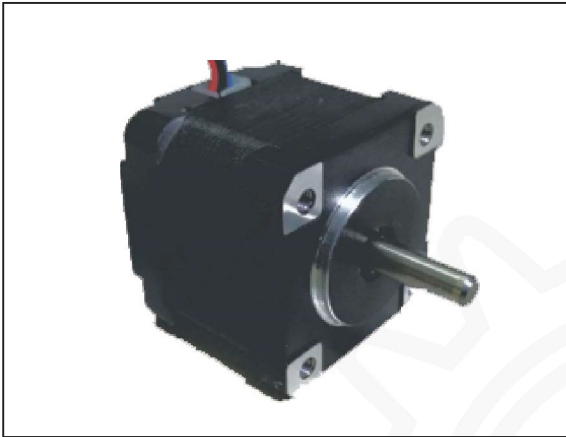


Nema 14 Size - 2 Phase Hybrid Step Motor



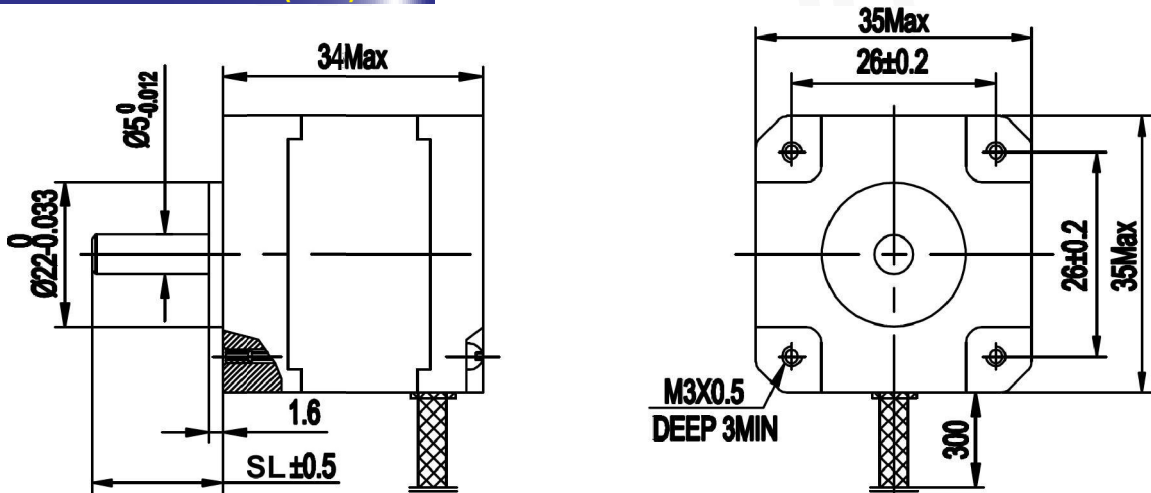
Features

- Low Vibration
- Low Noise
- Smooth Movement

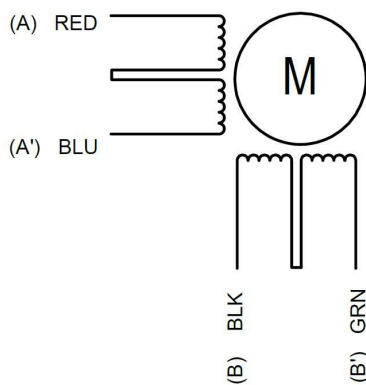
General Specifications

- Step Angle : 1.8°
- Insulation Class : B
- No of Motor Leads : 4

Mechanical Dimensions (mm)



Wiring Diagram



FULL STEP 2 PHASE-EX.,
WHEN FACING MOUNTING END (X)

STEP	A	B	A'	B'	CCW
1	+	+	-	-	↑
2	-	+	+	-	↑
3	-	-	+	+	↓
4	+	-	-	+	↓

↑ CCW
 ↓ CW

Electrical Specifications

Model	Holding Torque (kgcm)	Current/Phase (A)	Resistance/Phase (Ω)	Inductance/Phase (mH)	Detent Torque (gcm)	Rotor Inertial (g-cm ²)	Weight (kg)	Length Lmax (mm)	Shaft OD (mm)	Shaft Length SL (mm)
PSM35HS2A34-2P	1.11	0.75	5.7	7	50	14	0.18	34	5	24
PSM35HS2A34-2P-SL16.5	1.11	0.75	5.7	7	50	14	0.18	34	5	16.5