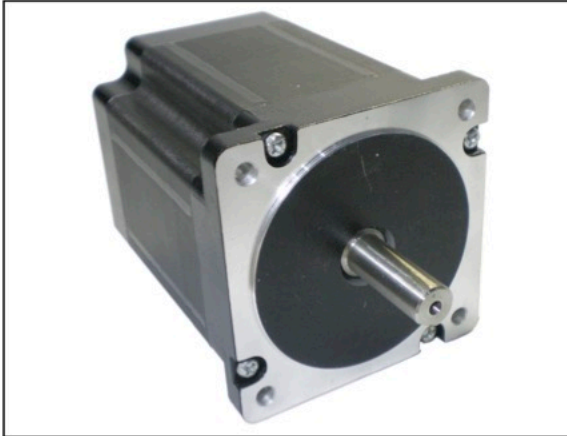


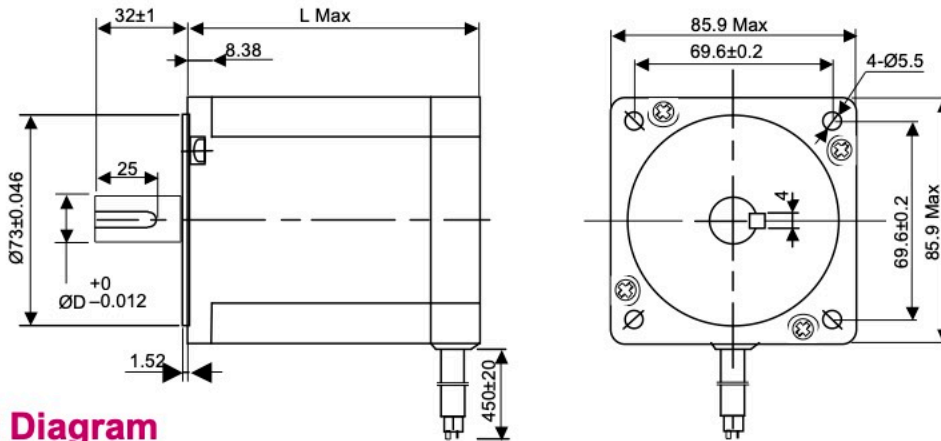
Nema 34 Size - 2 Phase Hybrid Step Motor



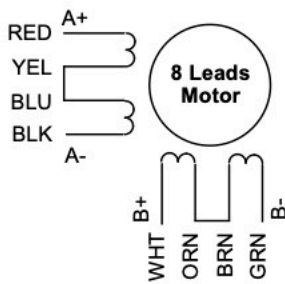
Features
 High Torque
 Low Noise
 High Acceleration

General Specifications
 Step Angle : 1.8°
 Insulation Class : B
 No of Motor Leads : 8

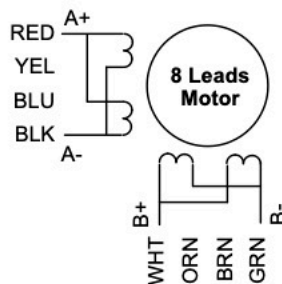
Mechanical Dimensions (mm)



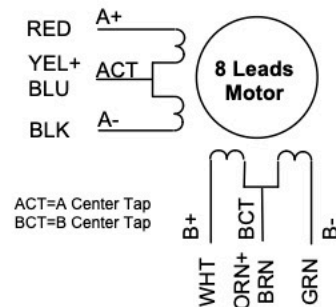
Wiring Diagram



Series Connection



Parallel Connection



Uni-Polar Connection

Electrical Specifications

Model	Holding Torque (kgcm)	Current/Phase (A)	Resistance/Phase (Ω)	Inductance/Phase (mh)	Detent Torque (gcm)	Rotor inertia (g-cm ²)	Weight (kg)	Length Lmax (mm)	Shaft ØD (mm)	Keyway (mm)
PSM86HS2A65-2P	35	2.0 (S) / 4.0 (P)	1.4	3.9	800	1000	2	65	9.5	0.8 x 25
PSM86HS2A80-2P	45	3.0 (S) / 6.0 (P)	0.8	3.5	1300	1400	2.3	80	12.7	1 x 25
PSM86HS2A118-2P	85	3.0 (S) / 6.0 (P)	0.87	4.4	2500	2700	3.8	118	12.7	2 x 25
PSM86HS2A156-2P	120	3.0 (S) / 6.0 (P)	1.12	6.4	4000	4000	5.4	156	15.875	2x 25